

City Manager's Weekly Update

May 28, 2021

Water

This week the Public Policy Institute of California put out a short report on the affordability of water. They analyzed monthly drinking water costs for 385 urban water suppliers, which serve roughly 92% of all Californians. You can read the briefing [here](#).

As you know, the issue of water affordability has been heavy on our hearts and minds at SCWD for some time. (In fact the PPIC brief features [Santa Cruz's affordability analysis](#).) I've compared it to seeing a train approaching: we can see a time coming when, because of the urgent need to reinvest in water infrastructure to ensure its safety and reliability, and the very high cost, we must charge so much for water that it simply becomes unaffordable for average citizens. Where there is both federal and state-level money available for infrastructure like roads and bridges, no such source of ongoing funding currently exists for water infrastructure.

We've been talking to legislators about the coming train, and we're not alone. As you'll see in the PPIC brief, about a third of state residents pay over \$80 per month for water and wastewater service. One of the challenges we face is that there is no single guideline for determining whether water bills are too high. Another daunting challenge is that per Prop 218, public water agencies are restricted in assisting low-income customers with water bills.

Progress slowly continues on the [Ocean Street Extension water main replacement project](#). We've installed just about 600 lineal feet of 8" pipe so far. The crew has faced alignment issues with the new pipe, as well as tough working conditions due to traffic and reduced work hours. Next week we're hosting an open house for those neighbors, as well as neighbors of the treatment plant, to share detailed construction plans for the new concrete tanks we're building. The tanks project is long and technically challenging, and we want to be as upfront and transparent about what neighbors can expect as we can.



Tight working conditions on Ocean Street Extension

Parks & Recreation

Delaveaga hosts Masters Disc Golf Cup Pro

The Delaveaga Disc Golf Course is ranked one of the top 10 in the world, and we are thrilled to host the Masters Disc Golf Cup Pro-Only PDGA National Tour.

The course will be closed to the public Thursday-Sunday, May 27-May 30th.

Spectator spots are limited, and paid.

More information can be found at santacruzmasterscup.com.



NT

SANTA CRUZ MASTERS CUP

Presented by Innova Disc Golf

May 28 - 30, 2021

Pro National Tour Event

PRO DIVISIONS	Cost
Mens Open (MPO)	\$250
Womens Open (FPO)	\$250

**** All players must be current PDGA certified official to play.**

**** ALL EVENT INFO ONLINE ****

www.SantaCruzMastersCup.com

Public Works

Engineering

We are scheduled to begin the 2021 Overlay Project on Tuesday, June 1, while the 2021 Surface Seal Project is already underway on Jewell Street. As both paving projects impact traffic, we apologize for any inconvenience this work may cause. Both Surface Seal and Overlay locations plus more project information available [here](#).



Public Works Week Selfie Winners

Congrats to our 1st place Selfie winners below! Check out our other winners [here](#). We thank all those who participated in this fun National Public Works Week tribute!



--Anna Davenport: Resource Recovery – "I love my Green bin!"

--Griffin Isen: Wastewater System – 1 million feet of City sewer pipeline maintained beneath this manhole.

--Matt Crosby: Traffic Engineering/Parking – ParkCards save money and stress at City meters.



--Christina Alberti: Traffic Engineering – Rapid Flashing Beacons increase safety for anyone crossing the street. --Maryna Sedoryk: Resource Recovery – Food Scraps Pilot Program drop-off bin.

Economic Development

Business Development

Santa Cruz County Official in Yellow Tier & State Provides Update on June 15th Reopening Guidelines

SANTA CRUZ COUNTY BLUEPRINT FOR A SAFER ECONOMY WEEKLY STATUS REPORT FOR 05/25/21

WHERE ARE WE IN THE TIERS?



THIS WEEK'S METRICS:

	SC County Metrics	Data Trend	Minimal Tier Targets
Adjusted Cases	1.3 Daily new cases (per 100k)	↑ +0.3	<2 Daily new cases (per 100k)
Positive Tests	0.5%*	---	< 2%
Weeks in Current Tier**	1	↑ +1	---
Weeks Meeting Lesser Tier Criteria	---	---	---

*If adjusted cases and positive test metrics fall into two different tiers, the county will be assigned to the more restrictive tier

**County must be in current tier for 3 weeks and have 2 consecutive weeks with metrics meeting lesser tier to advance

TIER 4 ALLOWS INDOOR OPERATIONS TO RESUME FOR SOME BUSINESSES INCLUDING:

- Restaurants with modifications at a max of 50% capacity
- Non-Mall Retail - with modifications
- Gyms and Fitness Centers + indoor pools + Saunas + Steam rooms with modifications and max 50% capacity
- Museums, Zoos, and Aquariums with indoor modifications
- Movie Theaters with modifications max 50% capacity
- Amusement Parks Max with modifications max 35% outdoors capacity and max 25% indoor capacity
- Outdoor live events with restrictions max 67% capacity including suites at 25% max capacity per suite
- Shopping Centers (Malls, Destination Centers, Swap Meets) open indoors with modifications and closed common areas and reduced capacity food courts
- Hotels and Lodging with modifications and Fitness centers 50% max capacity + indoor pools + Spa Facilities
- Places of Worship with modifications and max 50% capacity
- Bars (where no meal provided) with modifications and max 25% capacity, or 100 people, whichever is fewer
- Wineries, Breweries, and Distilleries open indoors with modifications 50% max capacity or 200 people, whichever is fewer

FIND THE FULL LIST OF INDUSTRY GUIDANCE AND OPERATIONS AT
Covid19.Ca.Gov/Safer-Economy
Produced and Distributed by the Economic Recovery Council of Santa Cruz County

PLAN DE ACCIÓN PARA UNA ECONOMÍA MÁS SEGURA DEL CONDADO DE SANTA CRUZ INFORME SEMANAL PARA EL 25/05/21

¿DÓNDE ESTAMOS EN LOS NIVELES?



LAS ESTADÍSTICAS DE ESTA SEMANA:

	Datos del Condado SC	Tendencias de Datos	Metas de Nivel Moderado
Casos Ajustados	1.3 Casos nuevos diarios (por 100 mil)	↑ +0.3	<2 Casos nuevos diarios (por 100 mil)
Pruebas Positivas*	0.5%*	---	< 2%
Semanas En Niveles Actuales**	1	↑ +1	---
Semanas Cumpliendo Criterios de Niveles Bajos	---	---	---

*Si los casos ajustados y los datos de casos positivos caen entre dos diferentes niveles, el condado asignará el nivel más restrictivo

**El Condado debe estar en niveles actuales durante 3 semanas y tener 2 Semanas consecutivas con niveles de datos inferiores para avanzar

EL NIVEL 4 AUTORIZA LA ACTIVIDAD COMERCIAL EN INTERIOR PARA ALGUNOS NEGOCIOS INCLUYENDO:

- Restaurantes con modificaciones a un máximo del 50% de su capacidad
- Venta minorista no comercial: operaciones en interiores permitidas con modificaciones
- Gimnasios y centros de fitness + piscinas cubiertas + saunas + baños de vapor con modificaciones y capacidad máxima del 50%
- Museos, zoológicos, y acuarios con actividades interiores a máxima capacidad de 50%
- Cines con modificaciones como máximo 50% de capacidad
- Parques de atracciones Max con modificaciones como máximo 35% de capacidad al aire libre y máximo 25% de capacidad en interiores
- Eventos en vivo al aire libre con restricciones de capacidad máxima del 67%, incluidas las suites al 25% de la capacidad máxima por suite
- Los centros comerciales (Malls, Destination Centers, Swap Meets) abren en interiores con modificaciones y áreas comunes cerradas y patios de comidas con capacidad reducida
- Hoteles y Hospedaje con modificaciones y gimnasios 50% capacidad máxima + piscinas cubiertas + Instalaciones de Spa
- Bares (donde no se proporciona comida) con modificaciones y una capacidad máxima del 25%, o 100 personas, lo que sea menor
- Las bodegas, cervecerías y destilerías abren en el interior con modificaciones 50% de capacidad máxima o 200 personas, lo que sea menor

ENCUENTRE LA LISTA COMPLETA DE ORIENTACIÓN Y OPERACIONES DE LA INDUSTRIA EN:
Covid19.Ca.Gov/Safer-Economy
Producido y distribuido por el consejo de recuperación económica del condado de Santa Cruz

Santa Cruz County remains in the Yellow Tier under the State's Blueprint for a Safer Economy.

Under the Yellow Tier, bars may open indoors at 25 percent capacity, or 50 percent if customers show proof of a vaccination or negative test. Indoor music venues may increase to 50 percent capacity with proof of vaccination or negative test. Outdoor performance venues, including music, sporting events and theater, may increase to two-thirds capacity. Saunas and steam rooms may open at 50 percent capacity. Family entertainment centers (bowling alleys, arcades, etc) may increase to 50 percent, or 75 percent with proof of vaccination or a negative test. Gyms may increase to 50 percent capacity, while amusement parks may increase to 35 percent. [View the full list of operations allowed under the tiers here.](#)

DOWNTOWN POPS! Program Tenant Applications Available Now



The City of Santa Cruz is pleased to release the request for proposals (RFP) for prospective tenants for the Downtown Pops! program. [The RFP document can be found here.](#) Please read the document fully

before beginning your application. If you need assistance preparing a business plan or financial projections please contact the Small Business Development Center: www.santacruzsbdc.org.

The deadline to apply has been extended to **June 4, 2021 at 4:00 PM**. We will be hosting an information session with the Downtown Association on June 1 at 8:30am to answer questions about the RFP.

[Zoom Link](#)

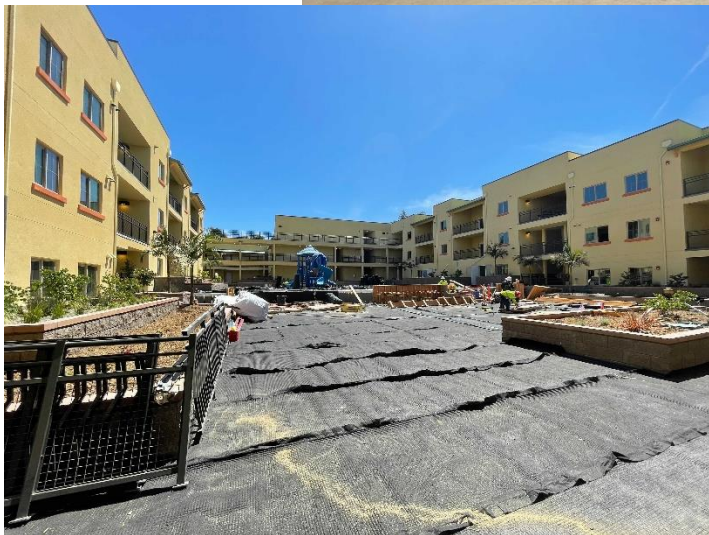
Zoom Meeting ID: 870 5540 4700

Passcode: **1234**

Please send any questions you may have in the meantime using the form at the bottom of the program website page and we will respond as soon as possible. [View the RFP and Apply Here](#)

Housing Development & Preservation

Celebrating the 350 Ocean Street Grand Opening



The City of Santa Cruz and Pacific West Communities, Inc. celebrated the grand opening of the 350 Ocean Street 100% Affordable Apartments on Thursday, May 27th.

Rental Applications are available now. For more information or to apply for a unit click [here](#).

For more information about the project click [here](#).

Habitat for Humanity ADU Program Available

Accessory Dwelling Units (ADUs) provide a unique opportunity for assisting homeowners with needed income, and providing new affordable housing rental units. Habitat has two programs for building ADUs. Check out which one might be right for you or someone you know!

1) Habitat ADU Program

- For Santa Cruz and Monterey Counties
- Aims to help low-income homeowners build an ADU on their property in order to stay in their home
- An ADU is built or renovated, and rented to a low-income household, providing income to the homeowner

2) My House My Home Program

- For Santa Cruz City or County only
- Aims to help low-income seniors (62+) keep their property and age in place
- An ADU is built or renovated, and rented to a low-income household, providing income
- Habitat can also provide some repairs to the main home to make it more accessible

Learn more and apply online: www.habitatmontereybay.com/adu

Arts & Culture

West Lake Elementary School PTA Sponsored a New Graphic Traffic Signal Box



The Westlake PTA worked within the City Arts Graphic Traffic Signal Box Program policies to sponsor a new painted signal box at the corner of High and Moore Streets. The PTA raised the funds to honor a beloved school Crossing Guard, Richard Bartlett, who had passed away. With support from the Arts Commission, the PTA issued a call for proposals from artists, seeking in particular a member of the Westlake parent and or teacher community. Local artist and Westlake parent Michelle Taniguchi was selected, based on the wonderful concept she submitted of the life cycles of the Monarch butterfly. Working her way around the box, from caterpillar to chrysalis, to soaring butterfly, the vivid colors and pronounced lines make the beautiful work easily seen from the street. On the side of the box nearest to “Richard Bartlett’s corner” is a tribute to the role of the crossing guard who safeguards our young students on their way to school.

The project was implemented with community input and support. It was significantly delayed by the COVID pandemic, but the entire community can share in the joy now of its completion.